

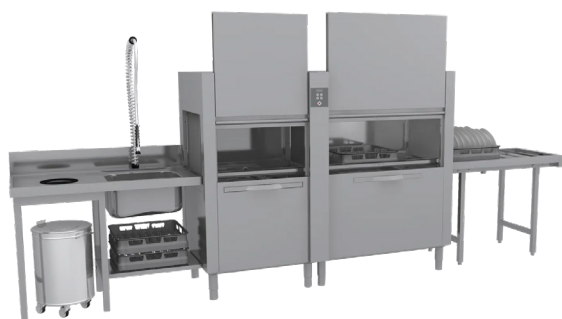
# Technical data sheet

## Product features



### Rack conveyor dishwasher 270 racks/hour cold water, right exit

<b>Model</b>	<b>SAP Code</b>	00014487
--------------	-----------------	----------



- To the product for free: 1x RM Clean+ 12 kg (00012271) and 1x RM Rinse+ 10 kg (00012273)
- Display type: ProSmart LED interface
- Number of programs: 4
- Number of skin: 2
- Maximal rack feed [racks/h]: 270
- Door clear height [mm]: 450
- Rack size [mm]: 500 x 500
- Water consumption of the washing cycle [l/basket]: 1,1 - 1,9
- Washing cycle time [s/basket]: 13 - 32
- Detergent and rinse pump system: ProDose - accurate dosing with a peristaltic pump
- Wash pump type: two-way - DuoFlow
- Detergent dispenser: Yes
- Rinse aid dispenser: Yes

<b>SAP Code</b>	00014487	<b>Boiler power [kW]</b>	27.000
<b>Net Width [mm]</b>	1968	<b>Basin volume [l]</b>	70
<b>Net Depth [mm]</b>	770	<b>Tank power [kW]</b>	10.500
<b>Net Height [mm]</b>	1615	<b>Water consumption of the washing cycle [l/basket]</b>	1,1 - 1,9
<b>Net Weight [kg]</b>	311.00	<b>Washing cycle time [s/basket]</b>	13 - 32
<b>Power electric [kW]</b>	41.200	<b>Maximal rack feed [racks/h]</b>	270
<b>Loading</b>	400 V / 3N - 50 Hz	<b>Door clear height [mm]</b>	450
<b>Boiler capacity [ l ]</b>	17.00	<b>Rack size [mm]</b>	500 x 500

# Technical data sheet

Technical drawing

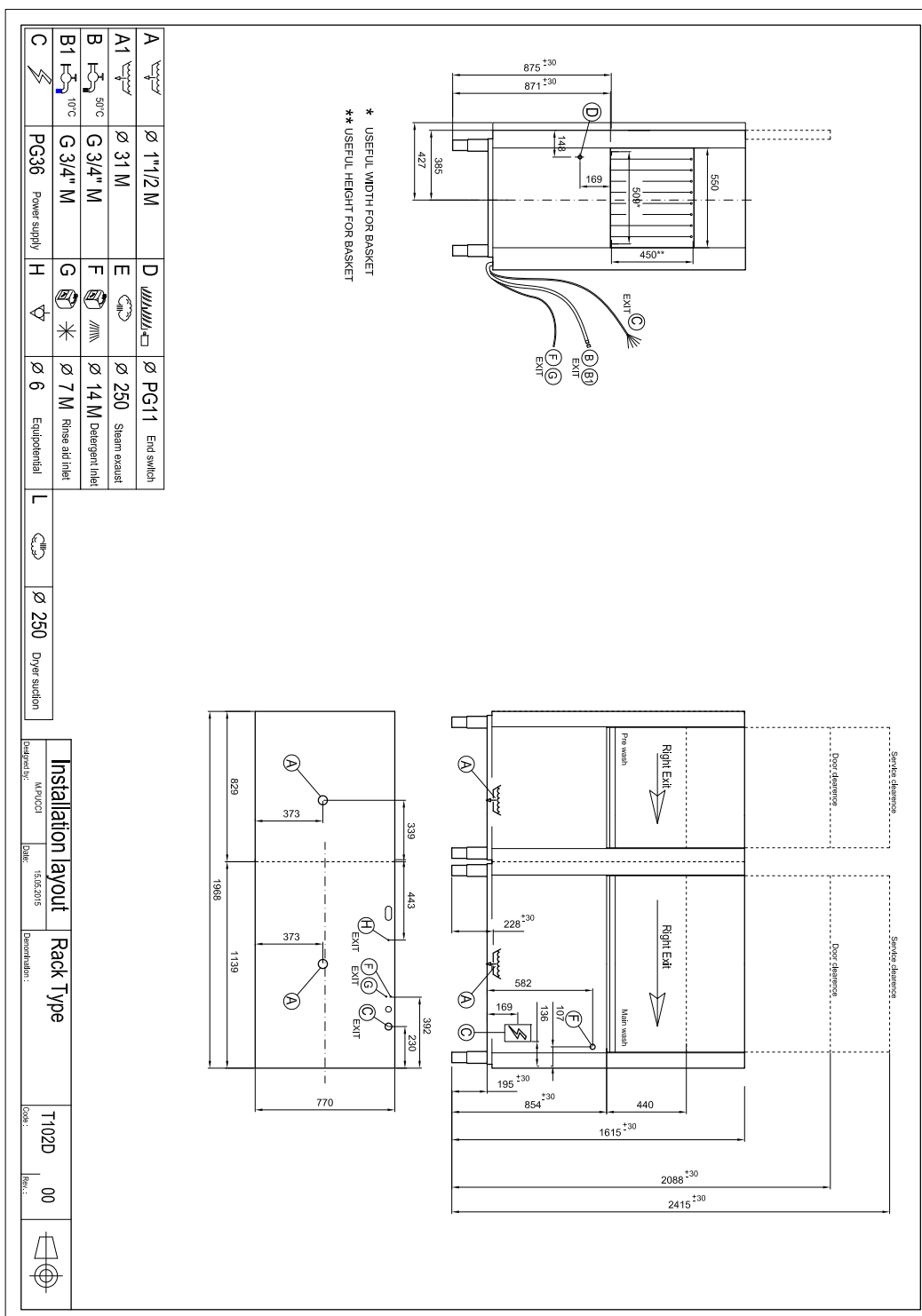


## Rack conveyor dishwasher 270 racks/hour cold water, right exit

Model

SAP Code

00014487



A		Ø 1" 1/2 M	D		Ø PG11	End switch
A1		Ø 31 M	E		Ø 250	Steam exhaust
B		G 3/4" M	F		Ø 14 M	Detergent inlet
B1		G 3/4" M	G		Ø 7 M	Rise aid inlet
C		PG36	H		Ø 6	Equipotential

L		Ø 250	Dryer station
---	--	-------	---------------

Designed by:	MAN/UCI	Drawn:	15.05.2015	Identification:	Rack Type	Code:	T102D	Rev.:	00
--------------	---------	--------	------------	-----------------	-----------	-------	-------	-------	----

# Technical data sheet

## Product benefits



### Rack conveyor dishwasher 270 racks/hour cold water, right exit

Model

SAP Code

00014487

1

#### Stainless steel outer shell construction

- round construction with stainless steel, rounded edges, Deep-drawn bathtub
- easy cleaning, high hygiene standard, long service life

2

#### LED Display

- proScreen 4 local display + 2 LED strips
- easy control of the dishwasher operation
  - continuous information on the status of the wash cycle
  - diagnostics in the event of a fault

3

#### Detergent dispensers

- two detergent and rinse aid dispensers
- precise chemical dosing by ProDose - precise dosing system for detergent and rinse aid by peristaltic pump setting of values via control panel

4

#### Double filter system

- the chamber filter and the waste filter together with the ArchiMedes system provide a discharge system with increased water purification efficiency
- higher washing efficiency; longer life of the washing bath

5

#### Energy saving

- Energy Saving energy saving system due to lowering the temperature of the boiler
- cost saving

6

#### Protection of fragile dishes

- softStart system of gradual start of washing programs to protect fragile dishes
- protects stemmed glasses and other fragile utensils

7

#### Possibility of recovery

- saving up to 40% of boiler energy  
improves the comfort environment of the workplace  
environment without steam  
saves water
- saving on energy and water costs; environmentally friendly system; safe system; pleasant workplace

8

#### Fast heating

- Performance management allows the current running of the boiler and basins body
- quick first warm-up of the dishwasher
  - smooth operation

9

#### Air break tank

- the open system of the boiler rinse, in cooperation with the rinse pump, ensures a constant pressure and temperature of the rinse
- possibility to use in HACCP systems water temperature suitable for sterilization

10

#### Sliding system

- a sliding system that moves the baskets through individual washing zones, the possibility to connect the drive to automatic tables
- quick distribution of dirty dishes

# Technical data sheet

Technical parameters



Rack conveyor dishwasher 270 racks/hour cold water, right exit

Model	SAP Code	00014487
-------	----------	----------

**1. SAP Code:**

00014487

**2. Net Width [mm]:**

1968

**3. Net Depth [mm]:**

770

**4. Net Height [mm]:**

1615

**5. Net Weight [kg]:**

311.00

**6. Gross Width [mm]:**

2100

**7. Gross depth [mm]:**

920

**8. Gross Height [mm]:**

1850

**9. Gross Weight [kg]:**

348.00

**10. Device type:**

Electric unit

**11. Control type:**

Digital

**12. Material:**

AISI 304

**13. Power electric [kW]:**

41.200

**14. Loading:**

400 V / 3N - 50 Hz

**15. Number of programs:**

4

**16. Opening of device:**

Retractable up

**17. Door clear height [mm]:**

450

**18. Inlet pressure [bar]:**

2-4

**19. Adjustable feet:**

Yes

**20. Number of skin:**

2

**21. Modular construction:**

Yes

**22. Pre-wash module:**

Yes

**23. Maximal rack feed [racks/h]:**

270

**24. Self-cleaning cycle:**

No

**25. Boiler capacity [ l ]:**

17.00

**26. Boiler power [kW]:**

27.000

**27. Basin volume [l]:**

70

**28. Tank power [kW]:**

10.500

# Technical data sheet

## Technical parameters



### Rack conveyor dishwasher 270 racks/hour cold water, right exit

Model	SAP Code	00014487
-------	----------	----------

**29. Number of washing arms:**

3

**30. Number of rinsing arms:**

2

**31. Washing arm type:**

Firm

**32. Washing arm material:**

Stainless steel

**33. Atmospheric boiler with rinse pump:**

Yes

**34. Rinsing arm type:**

Firm

**35. Rinsing arm material:**

Stainless steel

**36. Deep drawn tank:**

Yes

**37. Rack support:**

welded

**38. Tank surface strainers:**

stainless steel

**39. Boiler thermostat adjust:**

Yes

**40. Rack feed capacity:**

11-135-200-270

**41. Detergent and rinse pump system:**

ProDose - accurate dosing with a peristaltic pump

**42. Hot water electric valve:**

Yes

**43. Rack size [mm]:**

500 x 500

**44. Min supply water temperature [°C]:**

10

**45. Max supply water temperature [°C]:**

40

**46. Display type:**

ProSmart LED interface

**47. USB port:**

Yes, for Firmware actualisation

**48. Self-diagnostics:**

Yes

**49. Double rinse:**

No

**50. Wash pump type:**

two-way - DuoFlow

**51. Detergent dispenser:**

Yes

**52. Rinse aid dispenser:**

Yes

**53. Water consumption of the washing cycle [l/basket]:**

1,1 - 1,9

**54. Washing cycle time [s/basket]:**

13 - 32

**55. Rinse water temperature [°C]:**

82

**56. Standard equipment for device:**

1x glass basket, 1x plate basket, 1x cutlery basket

# Technical data sheet

Technical parameters



Rack conveyor dishwasher 270 racks/hour cold water, right exit

Model

SAP Code

00014487

**57. Program ProSpeed:**

No

**58. Program ProFessional:**

No

**59. Program ProFessional 2:**

No

**60. Program ProFessional 4:**

No

**61. Program ProFessional 6:**

No

**62. Program ProFessional 8:**

No

**63. Program ProFessional 10:**

No

**64. Program ProTemp:**

No

**65. Program ProSelf:**

No

**66. Program ProClean:**

No

**67. Program ProDrain:**

No

**68. Program ProEco:**

No

**69. Program ProNew:**

No

**83. Program Glasses:**

Yes

**70. Program ProLong:**

No

**71. Program ProGlass:**

No

**72. Program ProPlates:**

No

**73. Program ProCold:**

No

**74. Program ProWater:**

No

**75. Program ProActive:**

No

**76. Program ProActive 5:**

No

**77. Program ProActive 7:**

No

**78. Program ProSteel:**

No

**79. Program ProSan:**

No

**80. Program High Capacity:**

Yes

**81. Program General purpose:**

Yes

**82. Program Prolonged contact (DIN 10534):**

Yes

**85. Water supply connection:**

3/4"

# Technical data sheet

Technical parameters



Rack conveyor dishwasher 270 racks/hour cold water, right exit

Model

SAP Code

00014487

---

#### 84. Cross-section of conductors CU [mm<sup>2</sup>]:

25

– Výkon (kW): 17-22 (230 V); 30-38 (400 V)

---

#### 86. Diameter nominal:

DN 50